



# Keysoe Riding Club

## Newsletter

**Dec 17 - Jan 18**

**Training** *We offer a mixture of Flat Work, Pole Work and Jumping sessions on Monday mornings and evenings, Friday mornings and weekends - sessions are suitable for all levels.*



### **Pole Work with Natalie Banks**

*Sun 28 Jan at Ty-Croes Farm, Ravensden.*

Core, co-ordination and collection workout for horses.

£25 for members and £27.50 for non-members.

Please book via <http://clubentries.co.uk/keysoerc> or contact Luisa with any questions - [luikrc@gmail.com](mailto:luikrc@gmail.com)

### **Arena XC Training with Ann Taylor**

*Sun 21 Jan at Aston Le Walls, near Daventry*

XC on the all-weather XC arena which has a variety of drops, ditches, slopes and water as you would expect to find on a XC course. £45 each for small groups -pay via <http://clubentries.co.uk/keysoerc> - Contact [kit\\_krc@yahoo.co.uk](mailto:kit_krc@yahoo.co.uk) for more information.



## **KRC Weekday Training - only £17 / rider**

***Book in with Sylvie Hall on 07742113089***

Fri 5 Jan 10.30 -Flatwork with Jane Dawson (Indoor)  
Mon 8 Jan 10.30 -Poles with Tanya Woodhead (Main outdoor arena)  
Monday 8 Jan 7.30 (later time) -Jumping with Jo Gummer (Indoor)  
Fri 12 Jan -10.30 Flatwork with Jane Dawson (Back Arena)  
Mon 15 Jan -10.30 Gridwork with Tanya Woodhead (Back Arena)  
Mon 15 Jan -6.30 Jumping with Jo Gummer (Indoor)  
Friday 19 Jan 10.30 -Flatwork with Jane Dawson (Back Arena)  
Mon 22 Jan 10.30 -Poles with Tanya Woodhead (Back Arena)  
Mon 22 Jan 6.30 -Flatwork with Jo Gummer (Indoor)  
Fri 26 Jan 10.30 -Flatwork with Jane Dawson (Back arena)  
Mon 29 Jan 10.30 -XC portables with Tanya Woodhead (Back Arena)  
Mon 29 Jan 6.30 -Jumping with Jo Gummer (Indoor)

The organisation of the regular Friday and Monday training sessions is now being undertaken by Sylvie Hall. The booking system remains the same as before, text Sylvie (07742113089) to secure your place.

You will only be booked into the training if you have sent a text message indicating:

- date and time slot of training required
- name of person who is attending the training
- method of payment, ie cheque, cash or voucher.

Booking forms must be posted through the door of the KRC Office with payment prior to the training.

Text bookings to be received by Wednesday am for Friday training sessions and Friday am for Monday sessions.

Booking will be confirmed Wednesday pm for Friday and Friday pm for Monday training sessions.

***MEDICAL ARMBANDS – From the 1<sup>st</sup> Jan 18, KRC would like all members to wear medical armbands at Riding Club clinics, training and competitions.***

***This is to ensure we can easily access your medical & emergency contact information in the event of an accident.***



# Keysoe Riding Club

## Riding Club Teams Competitions Update

**Rulebook** - The BRC Handbook contains everything you need to know to compete in official Riding Club competitions, including what you and your horse are allowed to wear, eligibility criteria and rules for all the different Championships. We have also combined the BRC Rulebook, Organiser's Book and Affiliation Pack into just one book - the BRC Handbook, which now provides comprehensive information for everyone taking part in all BRC events and activities.

The [2017 Handbook is available to download](#) (pdf) and hard copies are for sale in the BHS bookshop.

**Prohibited Substances** - Please do familiarise yourself with rule G17: FORBIDDEN SUBSTANCES (BANNED SUBSTANCES & CONTROLLED MEDICATION) (page 21). BRC follows FEI rules regarding substances, and a full list of forbidden substances can be found on the FEI website <https://inside.fei.org/fei/cleansport/ad-h/prohibited-list>. This list can vary year to year so please do keep yourself up to date.

**Prohibited substances**  
database: <http://prohibitedsubstancesdatabase.feicleansport.org/search/>

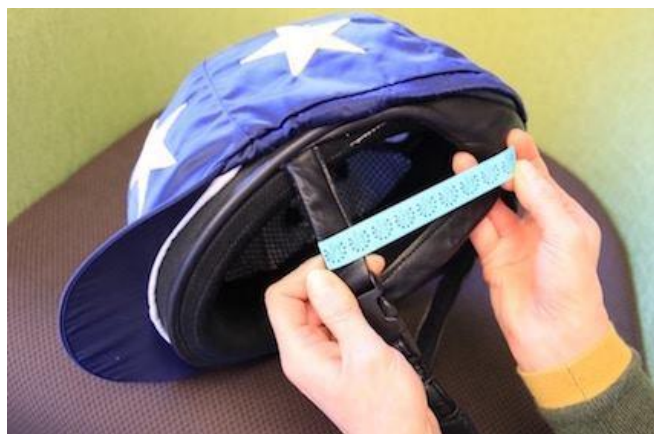
How sensitive are the random drug tests? The sensitivity of the tests is increasing, if you accidentally used the same mixing spoon for making up the feeds you could contaminate your horse sufficiently to fail the test.

<http://www.equinews.com/article/prohibited-substances-feed-and-the-performance-horse>



**Hat Tags** - British Eventing, British Riding Clubs and The Pony Club are delighted to announce that they have joined together to unify the hat standards across all three Member Bodies resulting in a **single hat tag** being accepted across British Eventing, The Pony Club and British Riding Club events in 2018.

The new 'aqua' coloured hat tag will carry the logo of the body that checks the hat so that the source of the tagging can be tracked and will mean that riders no longer have to wear multiple tags on their hats.



The 2018 hat rules includes a small change to the AS/NZS 3838 standard for The Pony Club and British Eventing, both of which will now only be accepting from 2006 onwards. All three bodies will use an aide memoire that will list the standards and quality assurance marks and will be used by officials.

**Body Protector Reminder** - As from 1 January 2018 a BETA Level 3 2000 purple label will no longer be accepted.



Body protectors must meet BETA Level 3 2009 purple label or after. The ONLY exception to the requirement for a BETA Level 3 2009 purple label is that Exo Body Cages will continue to be accepted, provided they have a BETA Level 3 2000 purple label. Riders wearing Exo Body Cage protectors must inform the secretary at all events. Body protectors should be fitted and worn as per the manufacturer's instructions.



# Keysoe Riding Club

## Riding Club Teams Competitions Qualifiers

### Winter Dressage - Qualifier

Area 7 Dressage - Novice and Intermediate Qualifiers take place on Saturday 17th February 2018 at Keysoe. Open to teams/individuals, both juniors or seniors.

*Please note all team members are automatically in the individual competition*

#### \* KBIS Novice Winter Dressage Qualifier

(Championships held 14-15th April 2018 at Arena UK)

Prelim 12 (2005)

Novice 28 (2008)

*NB two competitors ride prelim tests and two novice tests.*

#### \* Equi-theme Intermediate Winter Dressage Qualifier

(Championships held 27-29th April 2018 at Bury Farm)

Prelim 14 (2006)

Novice 24 (2010)

Novice 30 (2006)

Elementary 50 (2007)

*NB one competitor rides a prelim test, two competitors ride a novice test each and one competitor rides elementary.*

Mixed Senior and Junior Class:

Pick A Test Individual:

Medium 63 (2002) or Advanced Medium 93 (2004)

*Payment via club entries £17.50 per class.*

<http://clubentries.com/keysoerc/index.php>

If interested, please email [victorianewitt@yahoo.com](mailto:victorianewitt@yahoo.com)

- copy of passport (passport name, number & full flu vaccination history)
- competition name and any BD points
- recent competition history
- your membership number

ENTRIES TO BE COMPLETED BY MON 15 JAN 2018.

IF YOU ARE NOT YET A MEMBER AND YOU WISH TO COMPETE IN THIS COMPETITION, RENEW NOW!! 😊

### New BRC Events & Classes for 2018

- Brand new BRC Arena Eventing Championships for Juniors & Seniors, 70cm-100cm, teams and individuals.
- Grassroots pure dressage direct entry classes at the Dressage to Music Championships.
- Direct entry pure dressage for veteran horses & riders as at the National Championships
- Direct entry classes for retrained racehorses at the Dressage to Music Championships
- New Pairs Dressage to Music Championship class with a higher level eligibility
- 100 & 110cm Show Jumping at the Intermediate Winter Championships
- BRC BE League to include both Novice and Intermediate level
- Veteran Rider & Horse dressage at Elementary/Medium Pick a Test at National Championships



#### Other Winter Qualifier 2017/18 Dates

**22 April 2018 at Ely Eventing Centre**

FOH Combined Training

#### Summer Qualifier 2017/18 Dates

**6 May 2018 at Home Farm, Alconbury**

Dressage (Dressage & Riding Test)

**10 June 2018 at Ely Eventing Centre**

Horse Trials Qualifier (Ely EC)

**8 July 2018 at Boughton House**

Show Jumping & Style

**28 July 2018 at Keysoe EC**

Dressage to Music





# Keysoe Riding Club

## KRC Evening Leagues

We are pleased to confirm our next dates for the KRC Evening Dressage & Show Jumping League. Earn league points - prizes awarded at the AGM.

### Dressage League

*Tues 30 Jan at Keysoe EC from 5.30 pm*

Class 1 - Intro A (2008)

Class 2 - Prelim 7 (2002)

Class 3 - Prelim 18 (2002)

Class 4 - Novice 30 (2006)

Class 5 - Pick a Test –BE92 Novice 25 or Elem 44

*Entries £11 / class. Entries via horsemoney by Sun 10 Sept*



### Show Jumping League

*Wed 10 January at Keysoe EC from 6 pm*

Class 1 - 60 cm

Class 2 - 70 cm

Class 3 - 80 cm

Class 4 - 90 cm

Class 5 - 100 cm



## AREA 7 update

The area 7 AGM was held on 4 Dec at Biggleswade Fire Station.

The AGM was introduced by the Chair, Celia Whicher, who welcomed and thanked those attending.

Celia went on to say a big thank you and to express the committee's gratitude for all of the clubs volunteering and running the qualifiers throughout 2017.

There have already been volunteers for next year's qualifiers for which she expressed more thanks.

Area 7 had a very successful year, lots of competitors & volunteers and the Area was well represented at all Champs.

**A new Arena Eventing Championship will be starting next year! The Qualifier is to be held before Christmas 2018.**

New hat tag rules - BE, PC & BRC all to have same tag. Body Protectors must now be 2009 onwards.

Area 7's website is a work in progress! But the Facebook page is there for all: <https://www.facebook.com/BRCa7/>

## Volunteering

To help run Club events and shows, we ask that members help out at least once a year. Last year we trialled a volunteer card system. To align with the national volunteer's league run by BRC we will use their monthly cards to log your volunteer hours. Please send a picture or copy of the card to Katy Evans and she will keep a log of all your volunteer hours locally for the KRC rewards, and send the original to BRC competitions as per the instructions on the card.

There are a variety of BRC volunteer leagues

**Club League** - will be for volunteers who help at club activities run under BRC rules.

**Area League** - will be for volunteers who help at area activities run under BRC rules.

**National League** - will be for all volunteers (including team volunteers) who help at Championships only.

For full details of the BRC volunteer league please visit: <http://www.bhs.org.uk/enjoy-riding/british-riding-clubs/brc-volunteers/volunteers-league>

To download a copy of the volunteer card click this link: <http://www.bhs.org.uk/~media/bhs/files/pdf-documents/brc/league-card-volunteer-2017.ashx?la=en>



# Keysoe Riding Club

## Membership

Thank you to everyone who has renewed their membership, if it has slipped your mind, please renew your membership as soon as possible. If you plan to represent the club at any area qualifiers you need to be a member before the prelim entries are made (sometimes up to 6 weeks in advance of the event).

Your membership includes the club newsletter and emails. It also includes affiliation to British Riding Clubs (BRC) and their insurance. In addition, you will receive the BRC's "Rider" magazine and be eligible for all BRC benefits, discounts, etc. Your details are to be stored on a database, but they will not be passed on to any third party for marketing or promotional use.

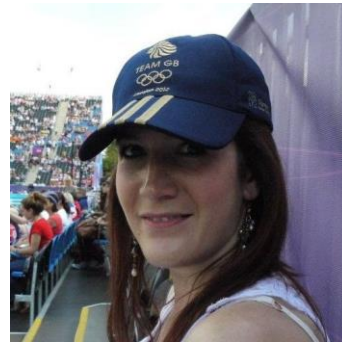
## Your Committee

### The Committee arrange activities and training for the KRC members

Chair	-	Kate Newell
Secretary	-	Sylvie Hall
Treasurer	-	Mary Lazarus
Membership & volunteers	-	Katy Evans
Vice chair	-	Kit Hore
Training Co-Ordinator	-	Sylvie Hall
Head Trainer	-	Jane Dawson
Eve Dressage League	-	Amy Houlding
Eve SJ League	-	Nigel Russell
Teams	-	Kit Hore
Dressage Chef d'Equipe	-	Victoria Newitt
SJ Chef d'Equipe	-	Luisa Mattei
Eventing Chef d'Equipe	-	Kit & Amy Houlding
Summer Camp	-	Jane & Sylvie Hall
Dressage Camp	-	Jane & Katie Newell
Jump Camp	-	Kit Hore
Website	-	Sophie Robbins
Rosettes	-	Monica Russell
Area Reps	-	Amy, Sophie & Mary
Club Welfare Officer	-	Jane Dawson

***Over the coming months the newsletter shall feature different committee members.***

***This month meet Katie Newell, your Chair, and Victoria Newitt, your Dressage Team Manager.***



**Kate Newell:** I've been a KRC member for 8 years. I have previously served on the Committee as dressage team manager from 2011-2014.

As Chair I am looking forward to getting out and about, meeting and supporting our members.

We are very fortunate at KRC to have some very talented and passionate team and individual riders, but I am also keen to encourage those at grass roots level too.

I have two horses: Rain, a 17 year old TB gelding, and Ralph, a 3 year old warmblood gelding. I enjoy training and competing at affiliated and riding club dressage.



**Victoria Newitt:** This is my first time on the Committee, but I have been a member of KRC for some years now. I am a keen supporter of British Riding Club events and I look forward to representing Keysoe again. The opportunities to compete and train are second to

none, and I would encourage members to get involved in their discipline of choice.

I own three horses, one retired and two that I compete: Buddy, a 17.1 TB gelding who I have had for 18 months and is the loveliest horse. Straight out of a P2P yard, he has developed into a great all-rounder from hunting to qualifying for the ROR dressage finals at Aintree; evented at BE80T this year and the aim is to step up to BE90 next year. And then there's Bria..... my enigmatic 16.2 warmblood mare who I have owned for 4 years - the most talented horse I have ever sat on but also the most neurotic! She competed at BD Prelim this year and will be stepping up to BD Novice once she is back to full fitness after injury.

The horses keep me very busy but I try and find time for my other passion – running. I have competed in two half marathons so far and hope to do a 3rd in the New Year.